



UNSW Built Environment Alumni Newsletter

Never Stand Still

Built Environment

Student Awards and Prizes Ceremony

by Paul Denham



Over 350 students, staff, industry colleagues and family packed the Leighton Hall at UNSW Kensington campus for the 2016 Built Environment Awards and Prizes ceremony.

The ceremony shone a spotlight on those students who have excelled at academic performance throughout the year. Over 80 awards, prizes and scholarships were recognised and in many cases students were presented their awards by private donors and industry partners who have generously supported UNSW Built Environment and their students.

“Having heard tonight the breadth and quality of our students’ achievements, I have been both impressed and greatly encouraged by what I see as the next group of architects and designers, planners, project managers and allied professionals pursuing careers in built environment fields. It’s in good hands.

Our faculty alumni have excelled in their professions and I look forward to one day hearing of your achievements as a Built Environment alumnus,” *Professor Helen Lochhead, Dean UNSW Built Environment.*

UNSW Built Environment congratulates all the winning students and thanks our private donors and industry partners who donated their time and money so generously.

Pictured top: (L–R) Student recipients; Rohaan Taneja, Lornia Shi, James Anderson, Rosabel Santos, Frederique Sunstrum.

Pictured bottom: (L–R) Student recipients; Diana Espiritu, Tina Moon, Laura Ng, Lauren Rutstein).

Photos: Reece McMillan

DEAN'S MESSAGE

The end of semester one is upon us and it's been an amazing start for me.

Getting to know alumni, current students, staff and industry partners has helped me to settle in quickly. I thank you all for making me feel so welcome.

My new role has caused me to run into some old friends. I crossed paths with Professor David Sanderson while I was at Harvard so it was a delightful surprise that he, coincidentally, had accepted the position of the Inaugural Judith Neilson Chair in Architecture here at UNSW Built Environment. His first lecture was our third in the 2016 Utzon Lecture Series called *Resilient Neighbourhoods?* David trained as an architect and is now a disaster-risk reduction expert. He gave us some very sobering statistics about urban migration. He believes communities need to be taught resilience. He challenged us to think about how we as designers can and must help build more resilient cities.

On the 20th April we held our *Awards & Prizes* ceremony where we handed out over 80 accolades to past and present students. The ceremony shines a spotlight on those students who have excelled at academic performance throughout the year. I particularly enjoyed this event as it brings with it the opportunity to talk to students and meet their proud families. I also want to thank all of our industry partners who so generously gave prizes and helped support this event.

Speaking of striving for excellence, one of our most successful alumni, Terry Spinolo, has won two more awards. Terry graduated in architecture in 1977 and now has a Hong Kong based practice Inarc Design. Congratulations to Terry and his team.

Venice has been on the radar. Congratulations to Alumna Amelia Holliday, who is the co-curator of The Pool at the Venice Biennale. This is the first architectural exhibition in the new pavilion, so a real



achievement for this young architect. I was there for the opening and it was a definite highlight of the Biennale. Join our conversation and hear Amelia discuss her experience at UNSW Built Environment.

One of the stand-out components of studying with us is the opportunity to gain global real world experience. Students from our Architecture, Interior Architecture and Landscape Architecture courses went to Venice to explore ideas and come up with solutions for post-industrial urban environment as part of the Seidler Design Studio. The book of student projects showcases this interdisciplinary study and citylab.

For the first time, UNSW Built Environment students have been invited to design backdrops to a landmark Opera Australia production that charts the construction of the Opera House.

Thank you again for helping me to feel so welcome and I look forward to seeing you at one of our many upcoming events, especially our next Utzon lecture.

Professor Helen Lochhead
Dean, UNSW Built Environment

UTZON

Rethinking the Critical Role of Architects in Post Disaster Situations

By Fran Strachan



Pictured: Judith Neilson Chair in Architecture Professor David Sanderson delivering the Utzon lecture. **Photo:** Reece McMillan

Professor David Sanderson captivated his audience on May 4, with over 250 people attending our third Utzon lecture.

In the face of unprecedented urban migration, architects have a critical role to play in making our cities more resilient, says international disaster risk-reduction expert David Sanderson.

"With over half the world's population now living in urban areas, we need to build resilient cities to manage the potential over-crowding, poverty and natural disasters that will result from climate change," Professor Sanderson, UNSW Built Environment's inaugural Judith Neilson Chair in Architecture, has told an audience at the UNSW Built Environment Utzon lecture.

Sanderson is the inaugural Judith Neilson Chair in Architecture at UNSW Built Environment. The first of its kind in Australia, the Chair was established in 2015 with a \$10 million endowment from philanthropist and White Rabbit Gallery founder Judith Neilson.

If you missed out on this lecture you can view it online at be.unsw.edu.au/utzon/2016/

ALUMNI

Two Wins for Inarc at Asia Pacific Property Awards

By Paul Denham

At the recent 2016 Asia Pacific Property Awards, Hong Kong based Inarc Design Asia Group took out two top awards in the Interior Design category as well as receiving two nominees in the same category.

The first accolade, Best Retail Interior Hong Kong with a nomination for the Best Retail Interior Asia Pacific was for The Members Entrance at The Hong Kong Jockey Club.

The second award, Best Leisure Interior China with a nomination for Best Leisure Interior Asia Pacific was for The Capital, Beijing Clubhouse project also at The Hong Kong Jockey Club.

UNSW Built Environment alumni and Inarc's Managing Director, Terry A. Spinolo said, "We believe that the above achievements continue to reinforce and support our vision to be a creative, quality driven design firm in the disciplines of both interiors and architecture within the hospitality, residential, corporate and retail markets for qualified clients in Hong Kong, Asia and selected international locations."

See more at be.unsw.edu.au/news

Meet the Makers: Professor Helen Lochhead in conversation with Amelia Holliday

By Paul Denham

June saw the opening of the Australian Pavilion at the 2016 Venice Architecture Biennale.

It's called The Pool and has been co-curated by one of our Architecture alumna, Amelia Holliday who is a Director at Aileen Sage Architects.

Amelia is featured in our video series below called Meet the Makers and is in conversation with UNSW Built Environment Dean, Professor Helen Lochhead about her diverse career, her favourite things about studying at UNSW and her work on the Venice Architecture Biennale that is giving her some serious international exposure.

To hear the full conversation visit be.unsw.edu.au/news

STUDENTS

Students Re-interpret Venice at Seidler International Studio

By Paul Denham

UNSW Built Environment students collaborate with Università IUAV di Venezia in Venice.

For the second year in a row Venice has served as the backdrop to UNSW Built Environment's Seidler International Studio which is an interdisciplinary summer studio where 25 students from UNSW's Architecture, Interior Architecture and Landscape Architecture degrees spend two weeks working with 15 Master of Architecture students from the Università IUAV di Venezia.



Pictured: Venice Canal. Photo: Lisa Zamberlan

This second Seidler International Studio, was called *Venice Re-Interpreted* and involved the students investigating Venice's historical urban forms and urban typologies as well as selected modernist and contemporary projects. Students redeveloped south end of Giudecca Island into a new residential and culturally rich city.

The Seidler Studio included the opportunity to visit the Biennale of Art at The Giardini, meaning "the Gardens" which has been the site of the exhibition since 1895.



Pictured: Venice. Photo: Lisa Zamberlan

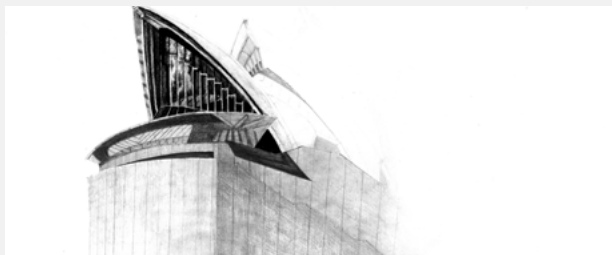
The Seidler International Studios are sponsored by the Seidler Architecture Foundation and are influenced by the Australian architect Harry Seidler's design principles and inspired by Seidler's travel photographs as collected in the volume *The Grand Tour, Travelling the World with an Architect's Eye* and his hand-drawings collected at the NSW State Library in Sydney.

For more information visit be.unsw.edu.au/news

UNSW students invited to collaborate on Opera Australia first

By Paul Denham

One hundred UNSW Built Environment students have been invited to design backdrops to a landmark Opera Australia production that charts the construction of the Opera House. Called Sydney Opera House—The Opera (The Eighth Wonder) it will tell the story of the creation of the Opera House and will be held outside the Opera House, for the first time, at the top of the 100 metre wide steps. In October this year, the expected 3,000 nightly audience members will gaze up the steps where dozens of actors, singers and a hills hoist will inhabit this huge outdoor “stage”.



Above: Sketch of the Sydney Opera House by Marcela Cuba Chen.

While UNSW Built Environment Computational Design students are making a huge 3D printed centre piece for the VIP area, UNSW Architecture students have been invited to develop images and short films that will be projected around the audience to create atmosphere and tell the story of many elements of the structure and interiors of the Opera House.

Sydney Opera House—The Opera (The Eighth Wonder) will be performed from October 28th until November 5th, 2016.

See more at be.unsw.edu.au/news

EVENTS

Upcoming UNSW Built Environment Events

Luminocity

The work of students will be showcased side by side with the return of Luminocity in September 2016. For more information visit: be.unsw.edu.au

Utzon Lecture Series 2016

UNSW Built Environment is well into the Utzon Lecture series for 2016. To register for future Utzon lectures go to be.unsw.edu.au/utzon/2016

For more details and a full calendar of UNSW Built Environment events, visit be.unsw.edu.au/events

RESEARCH

International Award for Innovation in Education and Training

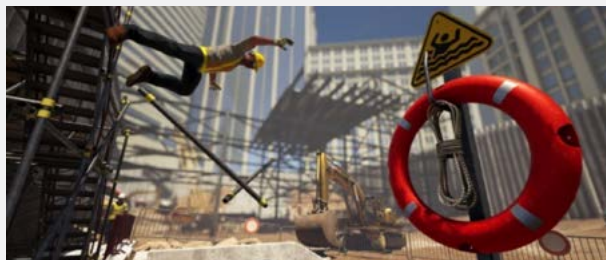


Photo: Russell Lowe and Sidney Newton

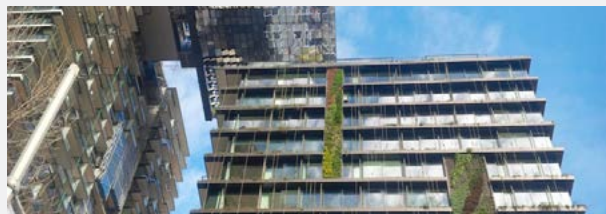
A productive cross-disciplinary collaboration between Associate Professor Sidney Newton and Russell Lowe from The UNSW Built Environment has led to the development of a radically new approach to the teaching and assessment of practice-ready skills in the construction industry, namely: The Situation Engine.

Developed with funding support provided by the Australian Government Office for Learning and Teaching, The Situation Engine applies advanced video game technology to drive change in on-site construction behaviour through a virtual personal experience of safe and unsafe work practices. It delivers an authentic first-person virtual site experience of exceptional quality based on actual project models created by building professionals. Powerful analytics ensure all activities can be benchmarked and the conditions of each situation model adapted dynamically to suit individual trainer and learner needs.

The Situation Engine has already been keenly adopted by universities and construction contractors in Australia, Hong Kong and the United Kingdom.

New Research Cluster Approved in High Performance Architecture

The cluster will focus on design, planning and management of high performance buildings and cities. Dr Ding is the cluster's inaugural convenor with an initial membership list of 34 staff and students.



Pictured: Central Park. **Photo:** GRCLCL.

For more UNSW Built Environment research news, visit be.unsw.edu.au/research-news

Connect

- / LinkedIn:
UNSW Built Environment
- / Twitter:
UNSWBuiltEnv
- / Facebook:
UNSW Built Environment

Contact

- / Kristy Trimboli:
+61 (2) 9385 8818
- / Email:
bealumni@unsw.edu.au
- / Alumni & Supporters:
www.be.unsw.edu.au

Support UNSW Built Environment

- / Kate Meyers:
+61 (2) 9385 9469
- / Email: k.meyers@unsw.edu.au
- / Alumni & Supporters:
www.be.unsw.edu.au